

ensileta global infra  
Think Beyond

DuraStack™

durable | comfortable | ergonomics



- Single mould construction
- Stack 12 high
- Better durability
- Available in five sizes



DuraStack Chair



DuraStack Tablet Arm



DuraStack Tandem Seating



DuraStack Tablet Arm



750mm

700mm

600mm

DuraStack Mini Desk



DuraStack Fixed Chair

## The DuraStack™ Chair

20-30% of high school students need more seating area than standard large chairs provide. With a remarkable 20% more seating surface area than the large chair, the extra large chair gives you a better fit for bigger students.

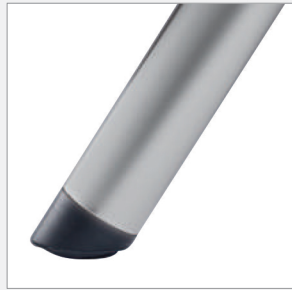
Exceptional comfort. Economical price. Sit up and take notice of the superior comfort and value of the image DuraStack chair. One-piece molded construction. Smooth waterfall front edge. Radiused edges. Metal back plate for added seating support with the image five year warranty.

Relocating these chairs is a breeze. Stack them 12 high on a dolly and they still fit easily through a normal doorway. Non-marring glides stay put with a unique flush design that can't be knocked off. For extra chair shell strength and support (critical when the chair is used by larger individuals) the DuraStack chair has a metal support plate.





DuraStack on Dolly



Non-marring Glides



DuraStack Metal Support

### Seat Height

Extra Small	11.5"
Small	13.5"
Medium	15.5"
Large	17.5"
Extra Large	18.5"

## Color Options



Bright Red



Tangerine



Lemon Yellow



Dark Green



Lime Green



Black Currant



Royal Blue



Nordic



Sky Blue



Black



Steel Grey

**ensileta global infra**

Think Beyond

[www.ensiletaventureprodux.com](http://www.ensiletaventureprodux.com)

**+91 93802 89546**